

## TWO MEAT BUNDLE



**\$16 Per Person** | 10 person minimum

Your choice of 2 meats, 2 sides, King's Hawaiian® Original Sweet Rolls, and your choice of sauce.

## THREE MEAT BUNDLE



**\$20 Per Person** | 15 person minimum

Your choice of 3 meats, 3 sides, Kings Hawaiian® Original Sweet Rolls, 2 small kine cookies per person, and your choice of sauce

## ONE MEAT BUNDLE



**\$12 Per Person** | 10 person minimum

Your choice of 1 meat, 1 side, Kings Hawaiian® Original Sweet Rolls, and your choice of sauce

## CHOOSE YOUR MEATS AND SIDES



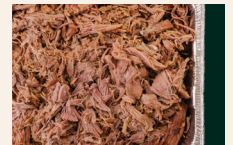
*Steak*



*Shrimp*



*Chicken*  
Teriyaki, Pūlehu, or  
Katsu Chicken



*Kālua Pig*



*Rice*

White or Brown Rice



*Macaroni Salad*



*Tossed Salad*



*Mixed Veggies*



Feeding the team? Enjoy the perfect bundle to build Hawaiian style sliders.

**VIEW OUR FULL A LA CARTE MENU**



# 'OHANA MEALS



Feeds 4 \$47.99



Feeds 6 \$71.99

A complete meal for a family or group of 4 or 6. Includes your choice of 1 meat, white rice, and macaroni salad. Substitute with brown rice, mixed veggies, or tossed salad on request. Comes with sauce cups. *Price varies on protein choice.*

## Island Style Catering

# BOXED LUNCHES



Mini \$13.29



Regular \$16.49

Mini or Regular Plate Lunch, individually packaged + 4 Small Kine Cookies. Choose up to 2 meats. Comes with white rice and macaroni salad. Brown rice or mixed veggies available. Substitute tossed salad + 1.00, Steak +1.99, or Shrimp +0.50 each choice.

# DRINKS AND EXTRAS



Don't forget your drinks the treats! Enjoy Spam Musubi packs, Small Kine Cookie Platters, Gallon POG Juice, or choose a variety of Hawaiian Suns, bottled sodas, waters, and energy drinks!

**CALL-IN | PICK-UP | DELIVERY**



**BUNDLE MEALS | A LA CARTE | BOX LUNCHES | 'OHANA MEALS**

Island-style catering made for each person in mind. From weddings, sporting events, and neighborhood block parties, Mo' Bettahs catering is ready to feed your group no matter the size.